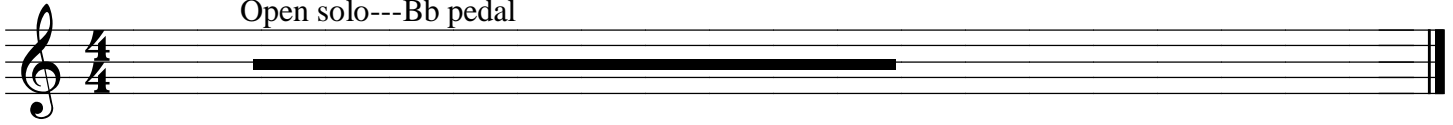


Phrase loosely

-Berkman

Open solo---Bb pedal



on cue



Bmaj7/Bb Bb7(b9)

Cm7(b5)

Bmaj7/Bb

Bb7

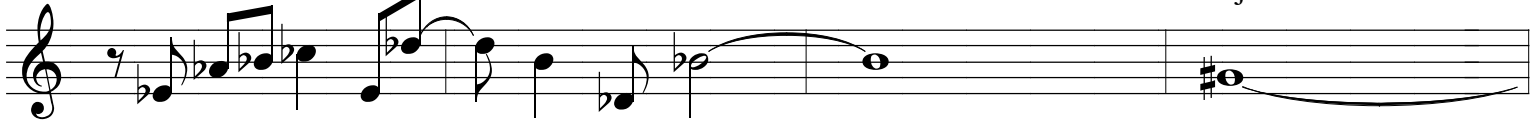
Bmaj7



Abm7/Eb

Eb7(b9)

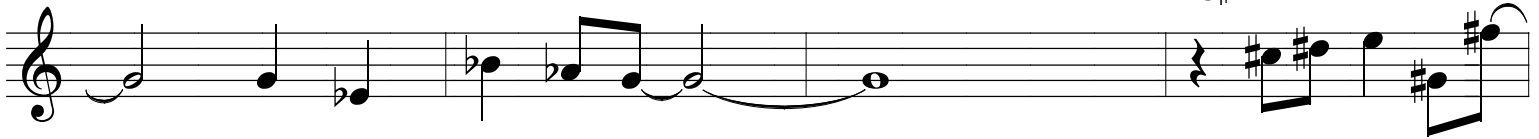
Emaj9



Eb7(b9)

Bb13(b9)

C#m7



A/Ab

Ab7(b9)

Eb

Eb7(b9)



Open solo Eb pedal

