

Not a Christmas Song

MYSTERIOSO

by David Berkman

Bass tacit

E \flat 6/9 A \flat 6/9 E \flat 6/9 B \flat m¹¹ Cmin⁷(\flat 6) B \flat 7sus⁴ A \flat 6/9 E \flat maj⁷/G

Cm⁷ A \flat m⁷ D⁷(alt) D \flat 7sus⁴

Cm¹¹ Fm⁷ A⁷sus⁴ C⁷sus⁴ Gmaj⁷(#11)/B B \flat 7sus⁴ D⁷

D \flat maj⁷ Cm⁷ A \flat m⁷ G \flat /B \flat

D \flat 7sus⁴ C⁷(#9) A \flat maj⁷ G⁹ Cm⁷ Fm⁷ B \flat m¹¹ A \flat /C

D \flat 7sus⁴ B \flat 5th E \flat (#11)

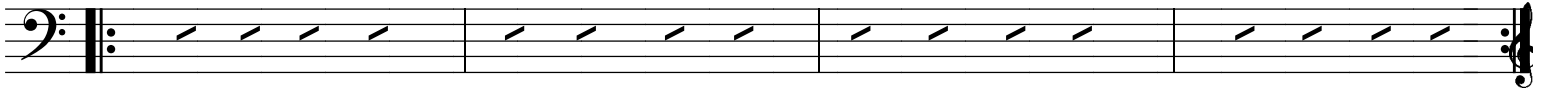
⊕ to CODA last time

Blowing Changes

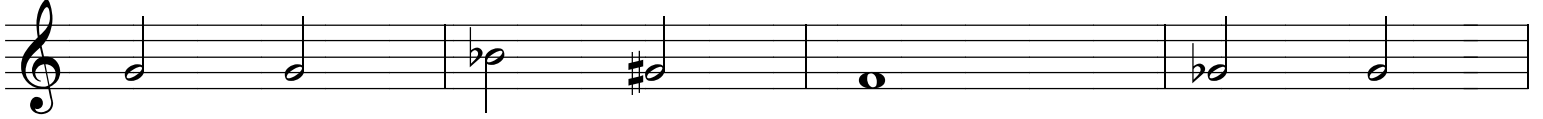
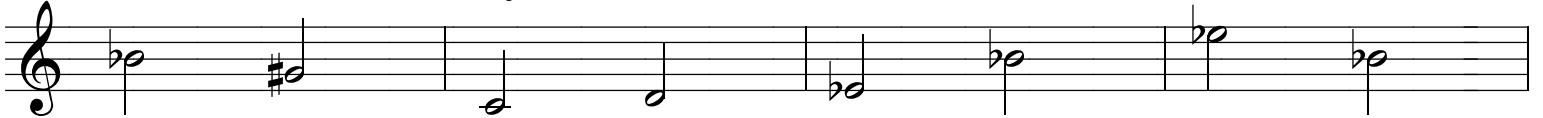
Bass walks
(start in style of bassline on head)

Cm⁷E^b (#11)

Open



on cue

A^bm⁷D⁷ (♭9, ♭13)D^b7sus⁴B^bm¹¹Bm¹¹Em¹¹A^bm⁷Fm⁷A⁷sus⁴G⁷/BB^b7sus⁴D⁷(♭9)D^bmaj⁷A^bm⁷G^b/B^bD^b7sus⁴C⁷(#9)A^bmaj⁷G⁷Cm⁷Fm⁷B^bm⁷A^b/CD^b7sus⁴B^bE^b (#11)

to open section---after all solos D.C. to Coda

CODA--last time

⊕

A^b/C^bEmaj⁷